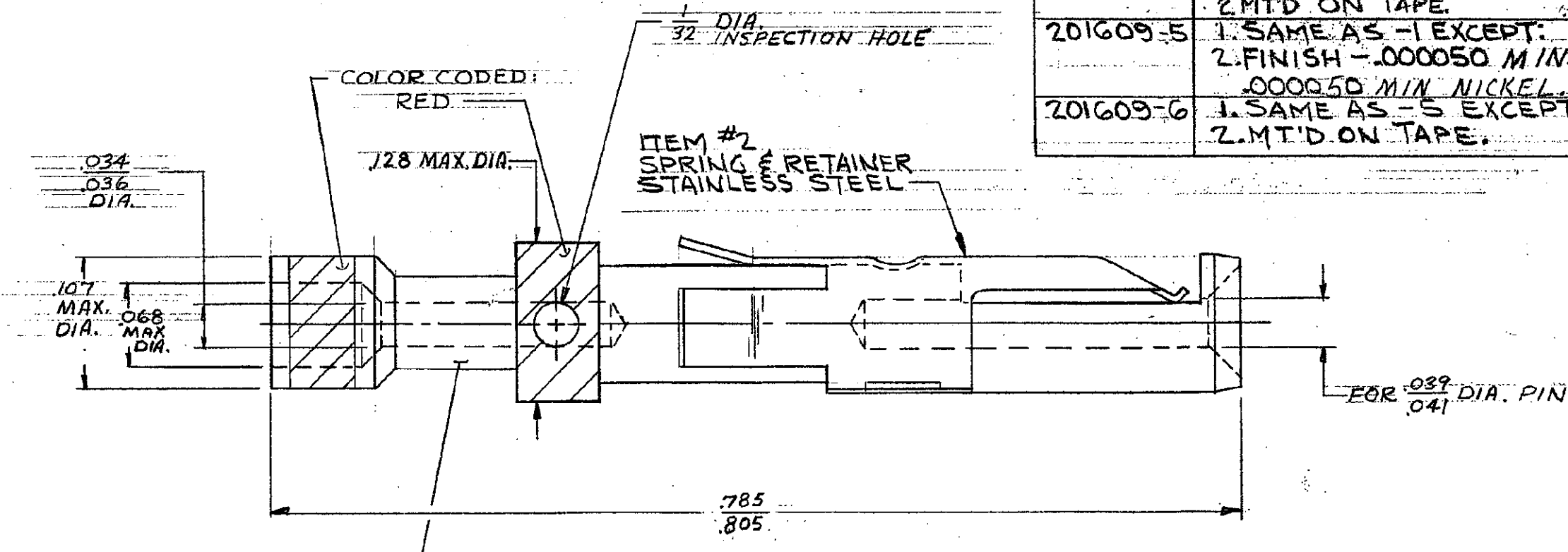


NUMBER
201609

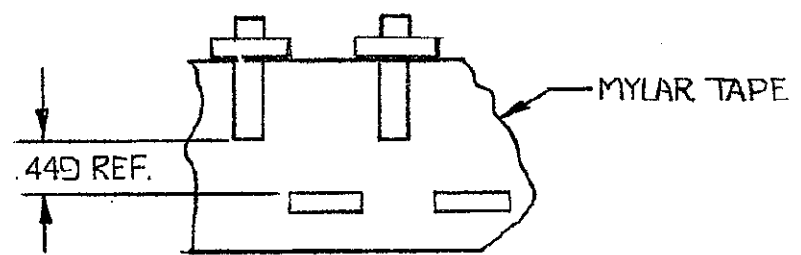
USED ON

	201609-1	1. AS SHOWN.
OBSOLETE	201609-2	1. SAME AS -1 EXCEPT; 2. FINISH OF ITEM #1, SILVER OVER NICKEL
OBSOLETE	201609-3	1. SAME AS -1 EXCEPT; 2. FINISH OF ITEM #1, .0001 MIN GOLD OVER .0001 MIN SILVER
	201609-4	1. SAME AS -1 EXCEPT; 2. MTD ON TAPE.
	201609-5	1. SAME AS -1 EXCEPT; 2. FINISH -.000050 MIN GOLD OVER .000050 MIN NICKEL.
	201609-6	1. SAME AS -5 EXCEPT; 2. MTD ON TAPE.



ITEM #1
SOCKET BODY
COPPER ALLOY
.00003 MIN GOLD OVER
.00005 MIN NICKEL

WHEN ORDERING CONTACT ON TAPE, ORDER BY THE TAPE NUMBER PLUS THE PACKAGING CODE AS FOLLOWS:
1. FOR USE WITH AMP TAPETRONIC, PNEUMATIC TOOL -
A. 1000 PARTS TO A BOX ADD PACKAGING CODE: 1MBOX
2. FOR USE WITH 4/8 INDENT STRIPPER CRIMPER -
A. 1000 PARTS TO A REEL ADD PACKAGING CODE: 1MREEL
B. 5000 PARTS TO A REEL ADD PACKAGING CODE: 5MREEL



TAPE MTD ASS'Y
201609-4 AND
201609-6 ONLY.

DIMENSIONS IN INCHES. DO NOT SCALE PRINT

P	REACTIVATE -4 PER EC		GT	6-9-58
	OGIC-62-98			
N	OBS-4 PER ECN B05016		NEW	1/92
M	OBS-3 PER ECN AD3038		J.P.	10/69
L	REV PER ECN B02619		THW	3-89
K	OBS-2 PER ECU	S 4359	THW	5-79
J	REACTIVATE -6 PER ECN	S 4770	THW	8-88
H	OBSOLETE -6 PER	S 4350	THW	12-82
G	REVISED	S 4142	THW	9-87
F	REACTIVATED -5 PER ECN	K 323	PLP	7/88
E	OBSOLETE -5	B 725	PLP	11/82
D2	NOTE ADDED	B 141	PLP	11/87
D1	REVISED	B 115	MI	8/87
D	REV RETAINER SPRING TO SET, Z	308	PLP	12-88
C	Added -4	2361	JCS	
B	REVISED	4-3	T-K	7-83
A	REVISED	14/68	PLP	12/82
LTR	REVISION RECORD	3341	PLP	5/82

PRINT DIST. 47

AMP 1541

TOLERANCES
EXCEPT AS NOTED
DECIMALS: ± .008
FRACTIONS: ± 1/64
ANGLES: ± 1/2°

© 1961 BY AMP INCORPORATED
AMP PRODUCTS COVERED BY PATENTS
AND/OR PATENTS PENDING

MATERIAL SEE CALL OUT	DR J. Kaufman 12-1-61	ENGR J. B. M. 12-5-61
HEAT TREAT -H-	CHK G. L. 12-5-61	APP J. C. 12/5/61
FINISH SEE CALL OUT	AMP AMP INCORPORATED HARRISBURG, PENNA.	
NAME #20 SOCKET CONTACT ASS'Y WIRE SIZE 28-24 ~.035-.055 INS. DIA.		
SCALE 10:1	LOC FT B	NO 201609
		REV P

CUSTOMER DRAWING